

REMEMBER

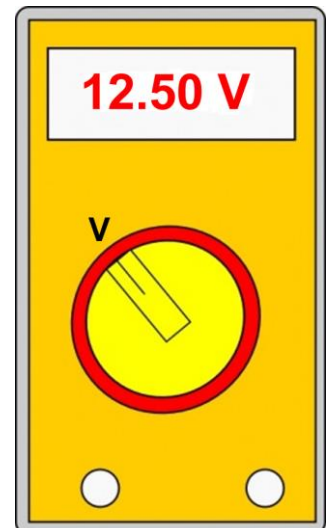
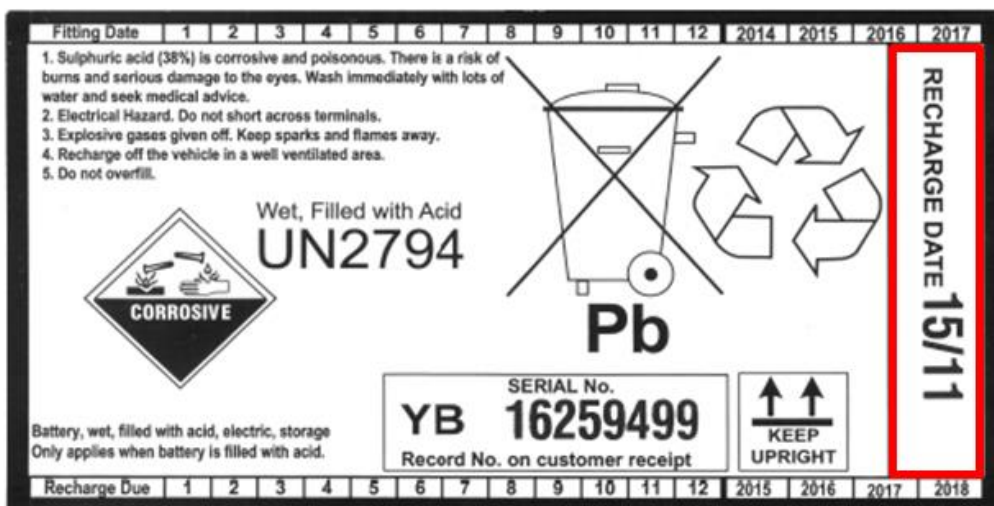
A BATTERY IS A LIVE PRODUCT THAT CONSTANTLY RELEASES ENERGY AND REQUIRES CARE & MAINTENANCE IN ORDER TO GIVE OPTIMUM PERFORMANCE WHEN IN SERVICE

ENSURE BATTERIES ARE STORED OFF THE FLOOR IN A COOL, DRY, WELL VENTILATED AREA AWAY FROM DIRECT HEAT SOURCES

MAKE SURE CARRYING HANDLES ARE IN THE DOWN POSITION, BATTERIES ARE STACKED NO MORE THAN 3 HIGH AND A BARRIER IS PLACED BETWEEN BATTERIES STACKED ON TOP OF ONE ANOTHER

ALWAYS FOLLOW FIFO (**First In First Out**) STOCK CONTROL PROCESSES

USE THE BATTERY RECHARGE LABEL TO IDENTIFY BATTERIES THAT HAVE REACHED THEIR SCHEDULED RECHARGE DATE AND **ALWAYS** CHECK STOCK BATTERY OCV (**Open Circuit Voltage**) ON A MONTHLY BASIS WITH A DMM (**Digital Multi Meter**)



REMOVE FROM STOCK & RECHARGE ANY BATTERY THAT HAS REACHED THE SCHEDULED RECHARGE DATE OR IS FOUND TO HAVE AN OCV OF 12.50 VOLTS OR LESS

ENSURE OLDER BATTERIES LEAVE STOCK FIRST AT ALL TIMES